

BASKET Strainer



藍式過濾器

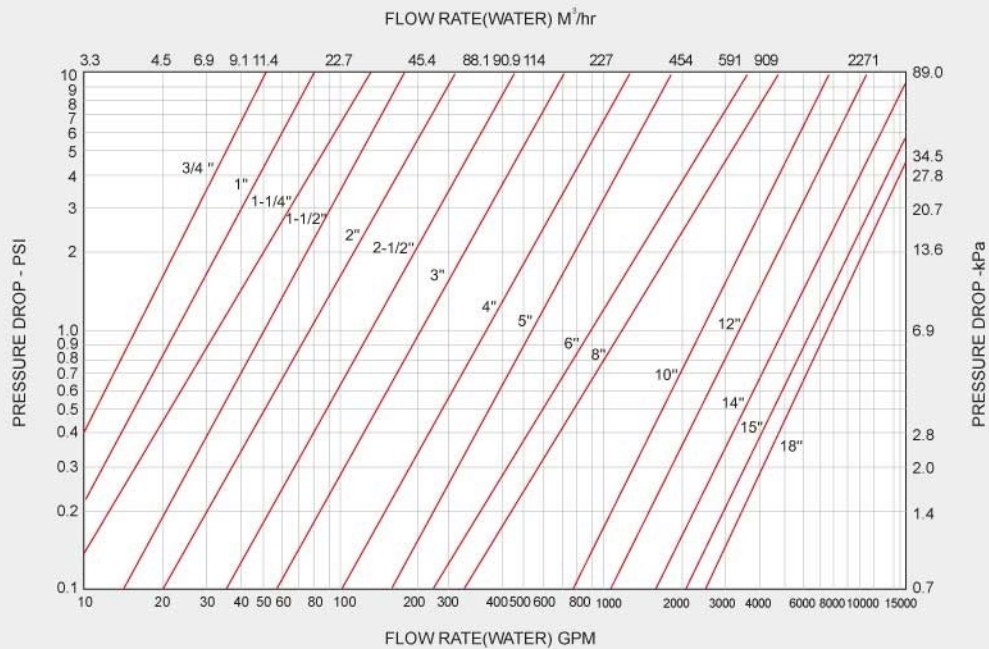
Features:

- ▶ Quick opening cover-no tools needed
 - ▶ Large capacity baskets
 - ▶ PTFE-coated that Excellent corrosion resistance
-
- ▶ 快拆上蓋-無需工具
 - ▶ 容量大的過濾籃
 - ▶ 可選擇特氟龍噴塗，免疫腐蝕性流體

Option:

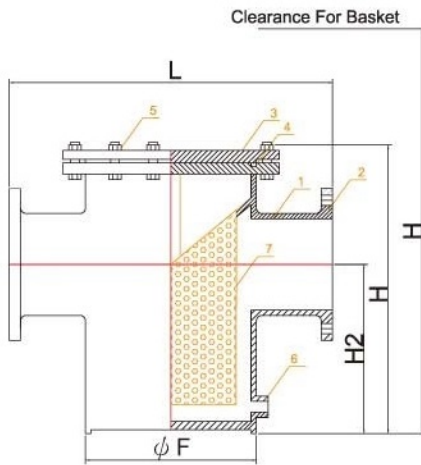
- ▶ Monel baskets are available
 - ▶ Viton、PTFE or EPDM Seals
 - ▶ PTFE-coated inside、low cost to replace exotic alloy strainers
-
- ▶ 過濾網可選擇蒙耐合金
 - ▶ Viton、PTFE or EPDM密封座墊可選
 - ▶ 特氟龍噴塗

■ Curve of Pressure drop & Flowrate

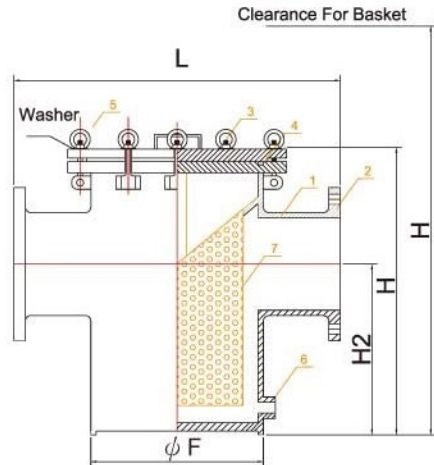


■ 流阻力系數 Cv Factors

Size	1"	1 1/4"	1 1/2"	2"	2 1/2"	3"	4"	6"	8"	10"	12"	14"	16"	18"
Cv	22.5	31.5	46	73	125	180	350	900	1400	2300	3200	5000	6000	7000



■ Normal



■ Fast disassemble

■ 材質表 PARTS AND MATERIAL

NO	PARTS NAME	MATERIAL		
		Cast Steel	Stainless Steel	
1	BODY	GB/T 20	A312 Gr Tp304	A312 Gr Tp316
2	FLANGED	A105	A182 F304	A182 F316
3	COVER	A105	A182 F304	A182 F316
4	GASKET	NBR / PTFE / VITON		
5	BOLT	A193/B7	A193/B8	A193/B8
6	PLUG	A105	SUS304	SUS316
7	SCREEN	SUS304	SUS304	SUS316

■ 尺寸 SIZE

SIZE	φ F	L	H	H1	H2
1"	89	180	260	410	160
1-1/2"	108	260	300	560	170
2"	133	280	300	560	170
2-1/2"	133	330	360	637	210
3"	159	360	400	710	250
4"	219	400	480	881	300
5"	273	480	550	1079	360
6"	273	500	630	1276	420
8"	325	560	780	1397	530
10"	426	660	930	1544	640
12"	460	750	1100	1739	650
14"	500	800	1200	1910	800
16"	550	840	1300	2100	850